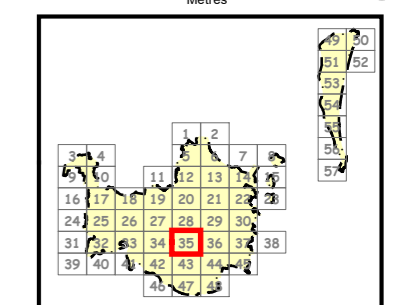
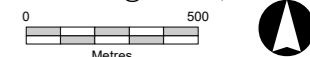


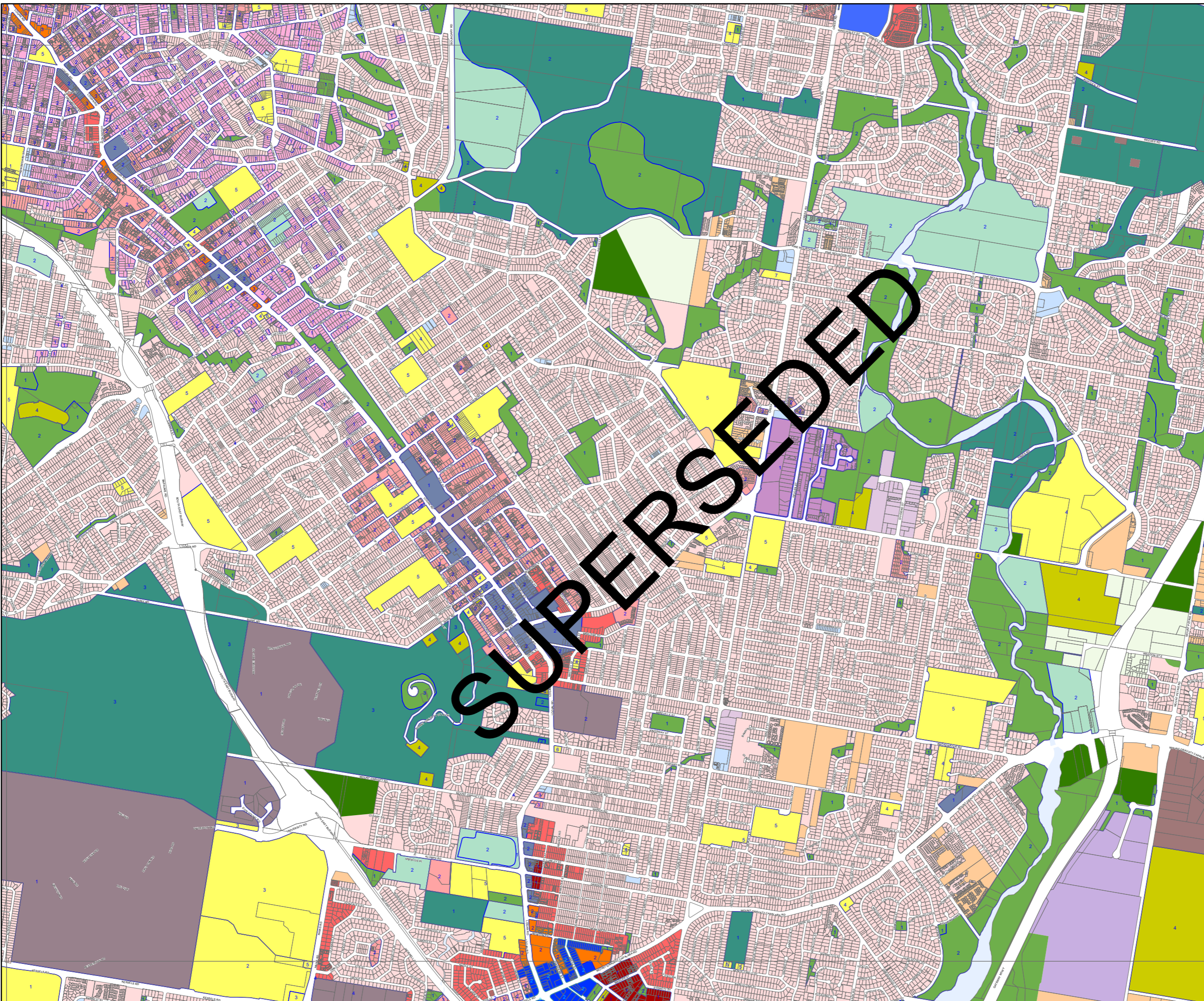
Zones:

- LDR Low density residential
- CR1 Character residential (Character)
- CR2 Character residential (Infill housing)
- LMR1 Low-medium density residential (2 storey mix)
- LMR2 Low-medium density residential (2 or 3 storey mix)
- LMR3 Low-medium density residential (Up to 3 storeys)
- MDR Medium density residential
- HDR1 High density residential (Up to 8 storeys)
- HDR2 High density residential (Up to 15 storeys)
- TA Tourist accommodation
- NC Neighbourhood centre
- DC1 District centre (District)
- DC2 District centre (Corridor)
- MC Major centre
- PC1 Principal centre (City centre)
- PC2 Principal centre (Regional centre)
- LI Low impact industry
- IN1 General industry A
- IN2 General industry B
- IN3 General industry C
- SI Special industry
- II Industry investigation
- SR Sport and recreation
- SR1 Sport and recreation (Local)
- SR2 Sport and recreation (District)
- SR3 Sport and recreation (Metropolitan)
- OS Open space
- OS1 Open space (Local)
- OS2 Open space (District)
- OS3 Open space (Metropolitan)
- EM Environmental management
- CN Conservation
- CN1 Conservation (Local)
- CN2 Conservation (District)
- CN3 Conservation (Metropolitan)
- EC Emerging community
- EI Extractive industry
- MU1 Mixed use (Inner city)
- MU2 Mixed use (Centre frame)
- MU3 Mixed use (Corridor)
- RR Rural residential
- RU Rural
- T Township
- Refer to Part 10 of the planning scheme
- Community facilities:**
- CF1 Major health care
- CF2 Major sports venue
- CF3 Cemetery
- CF4 Community purposes
- CF5 Education purposes
- CF6 Emergency services
- CF7 Health care purposes
- Specialised centre:**
- SC1 Major education and research facility
- SC2 Entertainment and conference centre
- SC3 Brisbane Markets
- SC4 Large format retail
- SC5 Mixed industry and business
- SC6 Marina
- Special purpose:**
- SP1 Defence
- SP2 Detention facility
- SP3 Transport infrastructure
- SP4 Utility services
- SP5 Airport
- SP6 Port

NOTES: This map is notional only and should not be used for interpreting City Plan provisions relating to specific sites. To properly interpret the maps, the planning scheme must be referred to.
 As adopted by Council, effective xx xx xxxx.
 Based on Cadastral Data provided with the permission of the Department of Resources.
 While every care is taken to ensure the accuracy of this data, the Brisbane City Council and the copyright owners, in permitting the use of this data, make no representations or warranties about its accuracy, reliability, completeness or suitability for any particular purpose and disclaims all responsibility and all liability (including without limitation, liability in negligence) for all expenses, losses, damages (including indirect or consequential damage) and costs which you might incur as a result of the data being inaccurate or incomplete in any way and for any reason.
 © The State of Queensland Department of Resources 2022
 © StreetPro 2022
 © Brisbane City Council 2022

Projection: Map Grid of Australia, Zone 56
 Horizontal Datum: Geocentric Datum of Australia 1994
 Approximate Scale @ A3 1:22,000





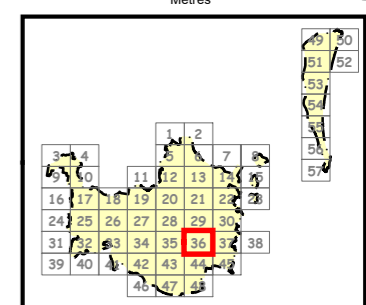
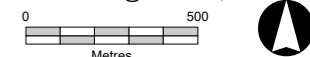
SUPERSEDED

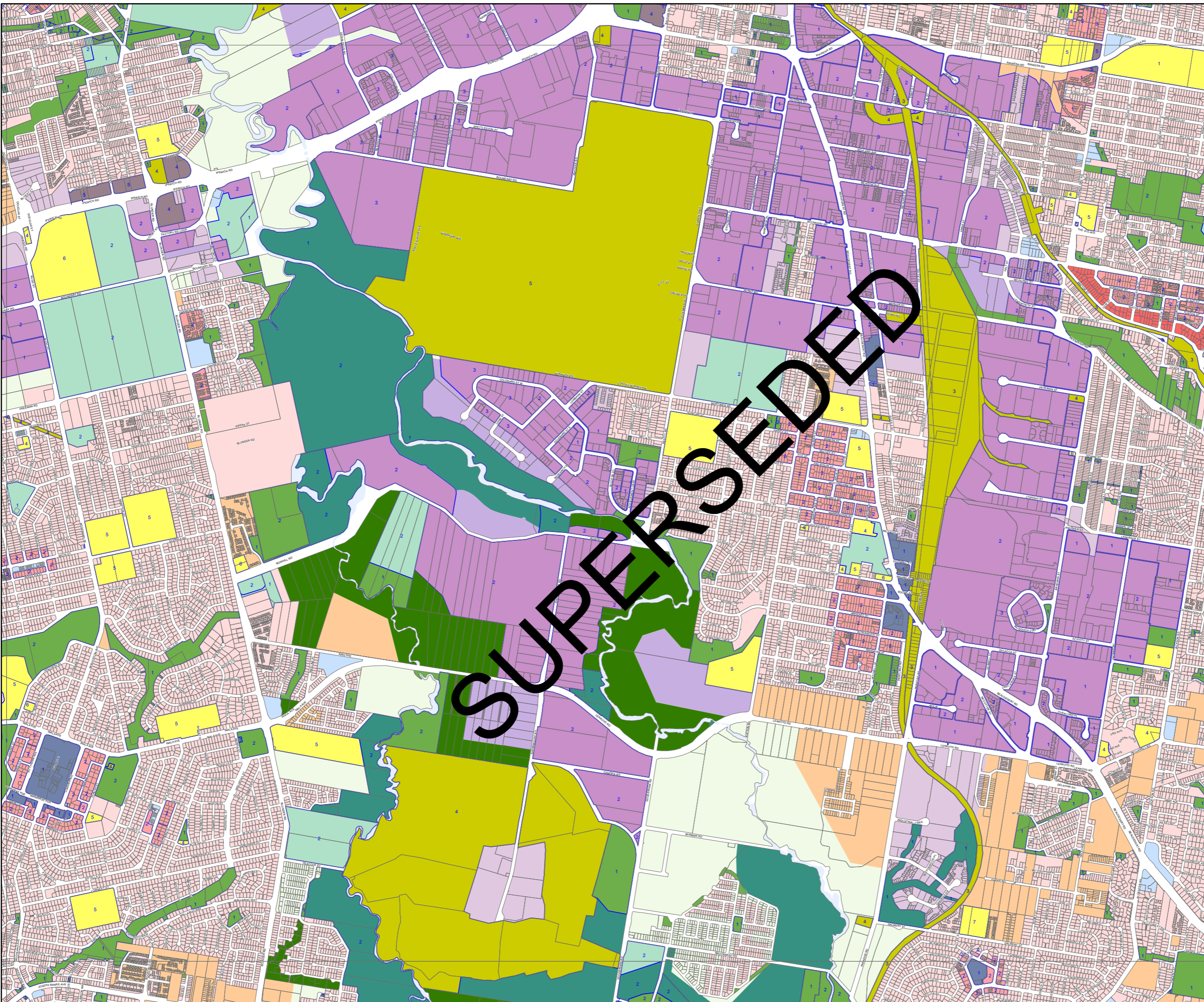
Zones:

- LDR Low density residential
- CR1 Character residential (Character)
- CR2 Character residential (Infill housing)
- LMR1 Low-medium density residential (2 storey mix)
- LMR2 Low-medium density residential (2 or 3 storey mix)
- LMR3 Low-medium density residential (Up to 3 storeys)
- MDR Medium density residential
- HDR1 High density residential (Up to 8 storeys)
- HDR2 High density residential (Up to 15 storeys)
- TA Tourist accommodation
- NC Neighbourhood centre
- DC1 District centre (District)
- DC2 District centre (Corridor)
- MC Major centre
- PC1 Principal centre (City centre)
- PC2 Principal centre (Regional centre)
- LI1 Low impact industry
- IN1 General industry A
- IN2 General industry B
- IN3 General industry C
- SI Special industry
- II Industry investigation
- SR Sport and recreation
- SR1 Sport and recreation (Local)
- SR2 Sport and recreation (District)
- SR3 Sport and recreation (Metropolitan)
- OS Open space
- OS1 Open space (Local)
- OS2 Open space (District)
- OS3 Open space (Metropolitan)
- EM Environmental management
- CN Conservation
- CN1 Conservation (Local)
- CN2 Conservation (District)
- CN3 Conservation (Metropolitan)
- EC Emerging community
- EI Extractive industry
- MU1 Mixed use (Inner city)
- MU2 Mixed use (Centre frame)
- MU3 Mixed use (Corridor)
- RR Rural residential
- RU Rural
- T Township
- Refer to Part 10 of the planning scheme
- Community facilities:
- CF1 Major health care
- CF2 Major sports venue
- CF3 Cemetery
- CF4 Community purposes
- CF5 Education purposes
- CF6 Emergency services
- CF7 Health care purposes
- Specialised centre:
- SC1 Major education and research facility
- SC2 Entertainment and conference centre
- SC3 Brisbane Markets
- SC4 Large format retail
- SC5 Mixed industry and business
- SC6 Marina
- Special purpose:
- SP1 Defence
- SP2 Detention facility
- SP3 Transport infrastructure
- SP4 Utility services
- SP5 Airport
- SP6 Port

NOTES: This map is notional only and should not be used for interpreting City Plan provisions relating to specific sites. To properly interpret the maps, the planning scheme must be referred to.
 As adopted by Council, effective xx xx xxxx.
 Based on Cadastral Data provided with the permission of the Department of Resources.
 While every care is taken to ensure the accuracy of this data, the Brisbane City Council and the copyright owners, in permitting the use of this data, make no representations or warranties about its accuracy, reliability, completeness or suitability for any particular purpose and disclaims all responsibility and all liability (including without limitation, liability in negligence) for all expenses, losses, damages (including indirect or consequential damage) and costs which you might incur as a result of the data being inaccurate or incomplete in any way and for any reason.
 © The State of Queensland Department of Resources 2022
 © StreetPro 2022
 © Brisbane City Council 2022

Projection: Map Grid of Australia, Zone 56
 Horizontal Datum: Geocentric Datum of Australia 1994
 Approximate Scale @ A3 1:22,000





Zones:

- LDR Low density residential
- CR1 Character residential (Character)
- CR2 Character residential (Infill housing)
- LMR1 Low-medium density residential (2 storey mix)
- LMR2 Low-medium density residential (2 or 3 storey mix)
- LMR3 Low-medium density residential (Up to 3 storeys)
- MDR Medium density residential
- HDR1 High density residential (Up to 8 storeys)
- HDR2 High density residential (Up to 15 storeys)
- TA Tourist accommodation
- NC Neighbourhood centre
- DC1 District centre (District)
- DC2 District centre (Corridor)
- MC Major centre
- PC1 Principal centre (City centre)
- PC2 Principal centre (Regional centre)
- LLI Low impact industry
- IN1 General industry A
- IN2 General industry B
- IN3 General industry C
- SI Special industry
- II Industry investigation
- SR Sport and recreation
- SR1 Sport and recreation (Local)
- SR2 Sport and recreation (District)
- SR3 Sport and recreation (Metropolitan)
- OS Open space
- OS1 Open space (Local)
- OS2 Open space (District)
- OS3 Open space (Metropolitan)
- EM Environmental management
- CN Conservation
- CN1 Conservation (Local)
- CN2 Conservation (District)
- CN3 Conservation (Metropolitan)
- EC Emerging community
- EI Extractive industry
- MU1 Mixed use (Inner city)
- MU2 Mixed use (Centre frame)
- MU3 Mixed use (Corridor)
- RR Rural residential
- RU Rural
- T Township
- Refer to Part 10 of the planning scheme
- Community facilities:
- CF1 Major health care
- CF2 Major sports venue
- CF3 Cemetery
- CF4 Community purposes
- CF5 Education purposes
- CF6 Emergency services
- CF7 Health care purposes
- Specialised centre:
- SC1 Major education and research facility
- SC2 Entertainment and conference centre
- SC3 Brisbane Markets
- SC4 Large format retail
- SC5 Mixed industry and business
- SC6 Marina
- Special purpose:
- SP1 Defence
- SP2 Detention facility
- SP3 Transport infrastructure
- SP4 Utility services
- SP5 Airport
- SP6 Port

NOTES: This map is notional only and should not be used for interpreting City Plan provisions relating to specific sites. To properly interpret the maps, the planning scheme must be referred to.

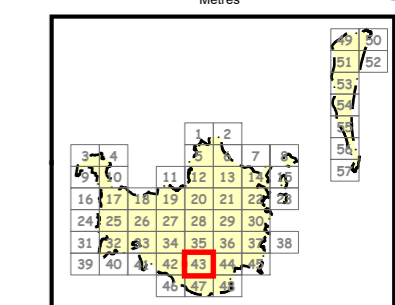
As adopted by Council, effective xx xx xxxx. Based on Cadastral Data provided with the permission of the Department of Resources.

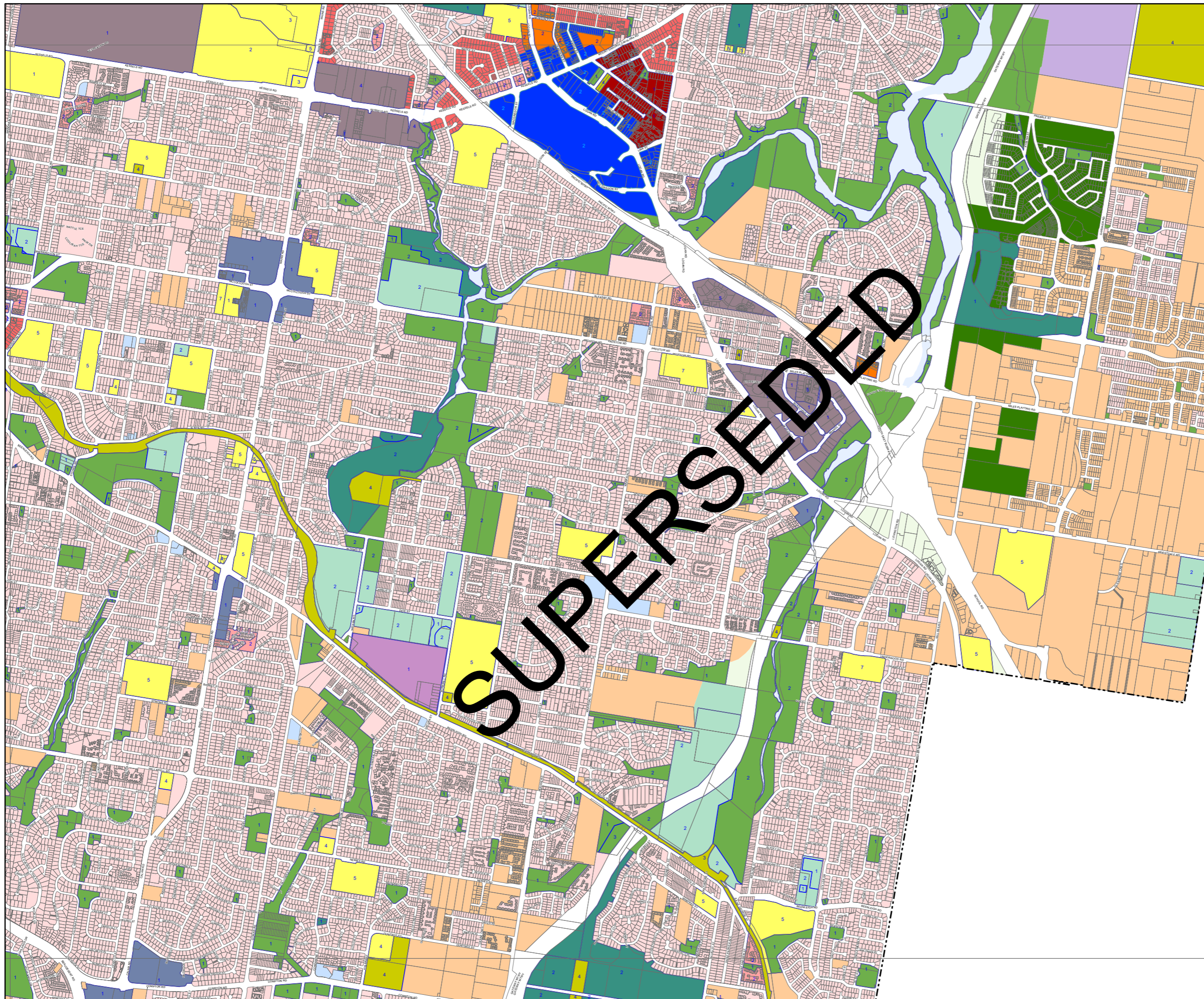
While every care is taken to ensure the accuracy of this data, the Brisbane City Council and the copyright owners, in permitting the use of this data, make no representations or warranties about its accuracy, reliability, completeness or suitability for any particular purpose and disclaims all responsibility and all liability (including without limitation, liability in negligence) for all expenses, losses, damages (including indirect or consequential damage) and costs which you might incur as a result of the data being inaccurate or incomplete in any way and for any reason.

© The State of Queensland Department of Resources 2022
 © StreetPro 2022
 © Brisbane City Council 2022

Projection: Map Grid of Australia, Zone 56
 Horizontal Datum: Geocentric Datum of Australia 1994

Approximate Scale @ A3 1:22,000





Zones:

- LDR Low density residential
- CR1 Character residential (Character)
- CR2 Character residential (Infill housing)
- LMR1 Low-medium density residential (2 storey mix)
- LMR2 Low-medium density residential (2 or 3 storey mix)
- LMR3 Low-medium density residential (Up to 3 storeys)
- MDR Medium density residential
- HDR1 High density residential (Up to 8 storeys)
- HDR2 High density residential (Up to 15 storeys)
- TA Tourist accommodation
- NC Neighbourhood centre
- DC1 District centre (District)
- DC2 District centre (Corridor)
- MC Major centre
- PC1 Principal centre (City centre)
- PC2 Principal centre (Regional centre)
- LI1 Low impact industry
- IN1 General industry A
- IN2 General industry B
- IN3 General industry C
- SI Special industry
- II Industry investigation
- SR Sport and recreation
- SR1 Sport and recreation (Local)
- SR2 Sport and recreation (District)
- SR3 Sport and recreation (Metropolitan)
- OS Open space
- OS1 Open space (Local)
- OS2 Open space (District)
- OS3 Open space (Metropolitan)
- EM Environmental management
- CN Conservation
- CN1 Conservation (Local)
- CN2 Conservation (District)
- CN3 Conservation (Metropolitan)
- EC Emerging community
- EI Extractive industry
- MU1 Mixed use (Inner city)
- MU2 Mixed use (Centre frame)
- MU3 Mixed use (Corridor)
- RR Rural residential
- RU Rural
- T Township
- Refer to Part 10 of the planning scheme
- Community facilities:
- CF1 Major health care
- CF2 Major sports venue
- CF3 Cemetery
- CF4 Community purposes
- CF5 Education purposes
- CF6 Emergency services
- CF7 Health care purposes
- Specialised centre:
- SC1 Major education and research facility
- SC2 Entertainment and conference centre
- SC3 Brisbane Markets
- SC4 Large format retail
- SC5 Mixed industry and business
- SC6 Marina
- Special purpose:
- SP1 Defence
- SP2 Detention facility
- SP3 Transport infrastructure
- SP4 Utility services
- SP5 Airport
- SP6 Port

NOTES: This map is notional only and should not be used for interpreting City Plan provisions relating to specific sites. To properly interpret the maps, the planning scheme must be referred to.
 As adopted by Council, effective xx xx xxxx.
 Based on Cadastral Data provided with the permission of the Department of Resources.
 While every care is taken to ensure the accuracy of this data, the Brisbane City Council and the copyright owners, in permitting the use of this data, make no representations or warranties about its accuracy, reliability, completeness or suitability for any particular purpose and disclaims all responsibility and all liability (including without limitation, liability in negligence) for all expenses, losses, damages (including indirect or consequential damage) and costs which you might incur as a result of the data being inaccurate or incomplete in any way and for any reason.
 © The State of Queensland Department of Resources 2022
 © StreetPro 2022
 © Brisbane City Council 2022

Projection: Map Grid of Australia, Zone 56
 Horizontal Datum: Geocentric Datum of Australia 1994
 Approximate Scale @ A3 1:22,000

